

SCHOOL DISTRICT OF MARSHFIELD

ATHLETIC FACILITY FEASIBILITY STUDY

Ad Hoc Committee Meeting

January 14, 2016

6:00 P.M.



IDENTIFYING THE NEED

PURPOSE: to identify athletic campus needs within the district and determine the need to act on improvements to the facilities.



EXISTING FACILITIES

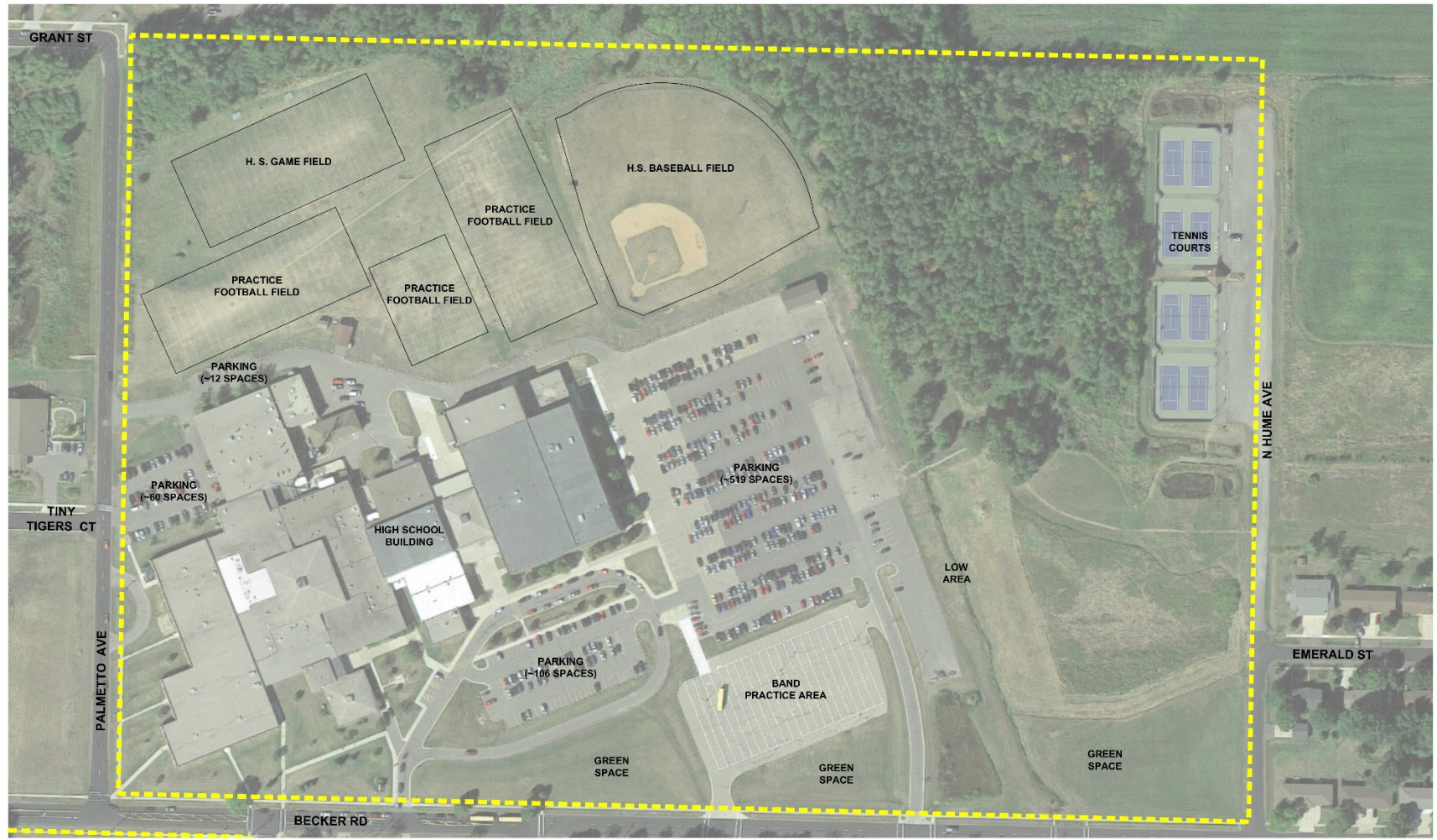
- **Marshfield High School**
- **Marshfield Middle School**
- **Madison Elementary**

A tour was conducted of each site to document the existing facilities and uses



EXISTING FACILITIES

Marshfield High School

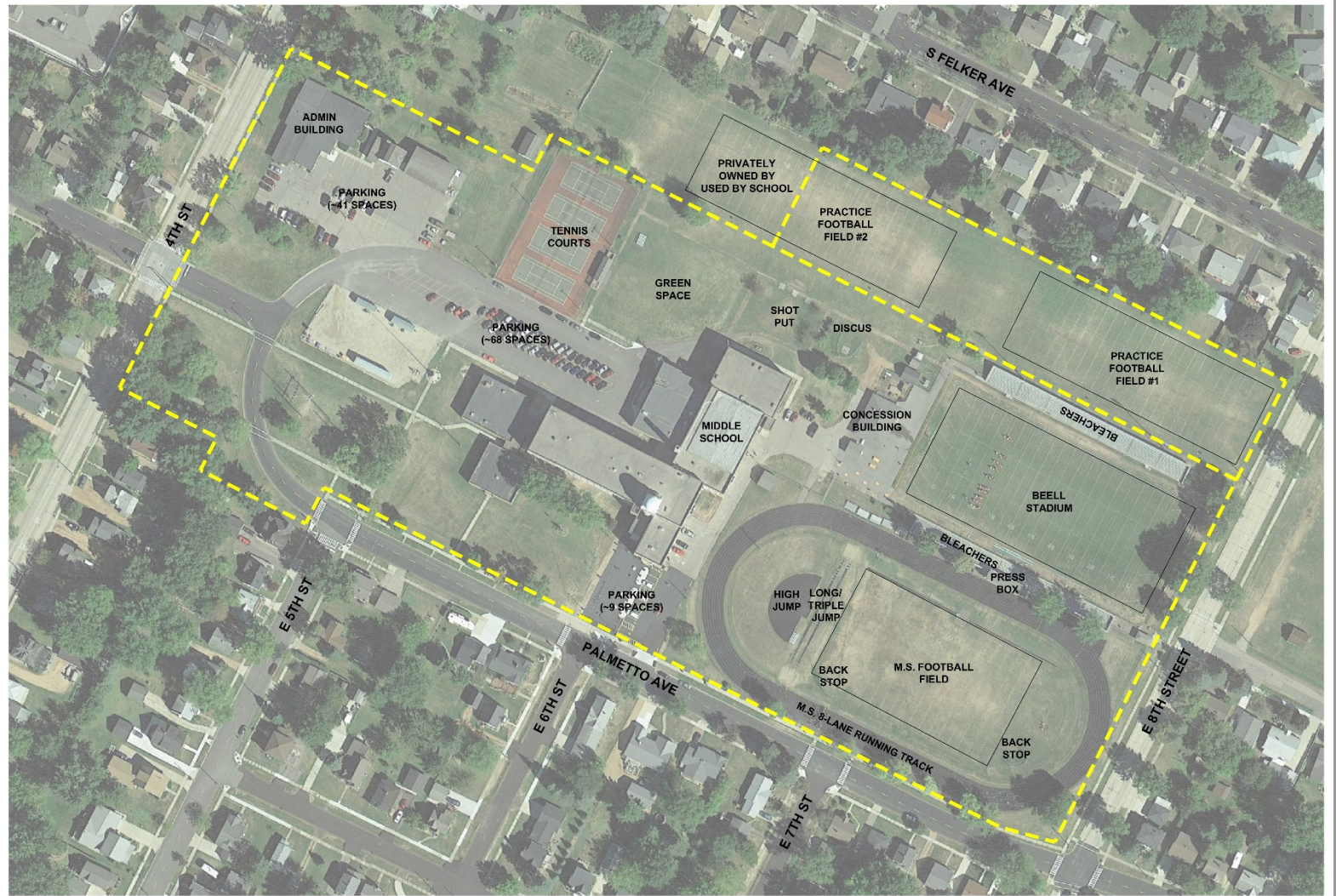


NOTE: Topographic Mapping, Soil Testing, and Wetland Delineations have not yet been completed.



EXISTING FACILITIES

Marshfield Middle School



NOTE: Topographic Mapping, Soil Testing, and Wetland Delineations have not yet been completed.



EXISTING FACILITIES

Madison Elementary School



PROJECT GOALS & OBJECTIVES

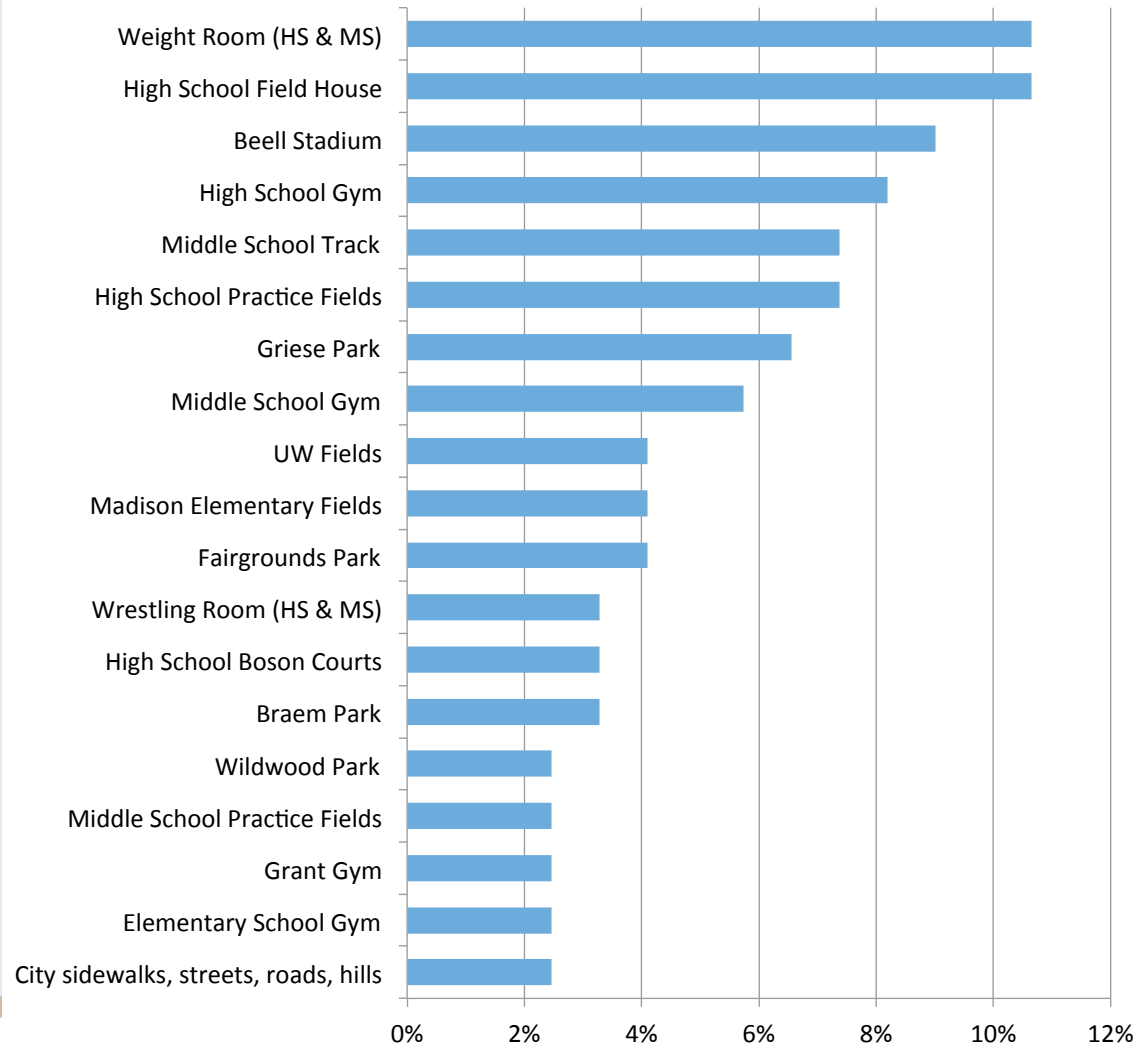
Work Completed to Date

- **Facility Tours**
 - Discuss and document existing outdoor athletic facilities with the School District of Marshfield.
- **User Group Survey**
 - Determine current use of facilities, deficiencies, and desired improvements of the direct user groups.
- **Community Survey**
 - Determine current use of facilities, deficiencies, and desired improvements of the community.
- **Current Facility Use Study**
 - Review current facility use and frequency of activities, study impact of new facilities on activities schedules and locations.



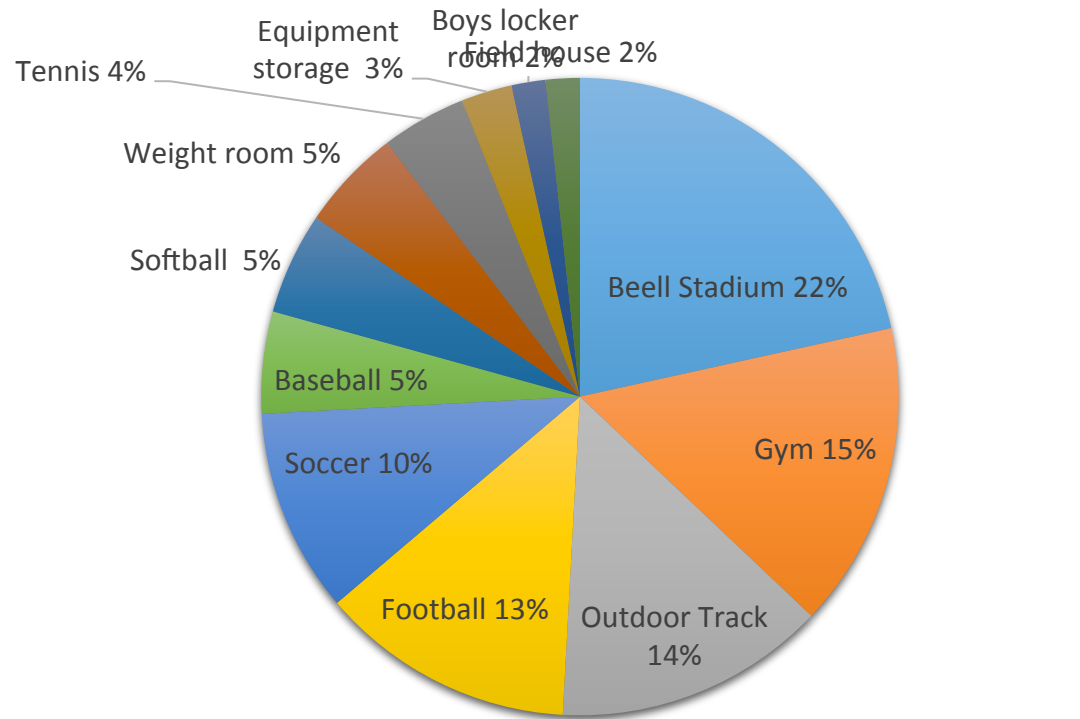
USER GROUP SURVEY (51 respondents)

Most Used Existing Facilities



USER GROUP SURVEY

Shortages/Problems with Existing Facilities



USER GROUP SURVEY

User Group Desired Facilities

Multisport Complex (Running Track, Syn.Turf Field Facility)

Running Track

Larger Fitness & Weight Room

Softball Fields

Synthetic Turf Field

Soccer complex (indoor)

Soccer fields/complex (outdoor)

Gym Space

Storage Space

Existing Track (repair)

Tennis courts (indoor)

Volleyball courts (outdoor)

Pool Improvements (seating)

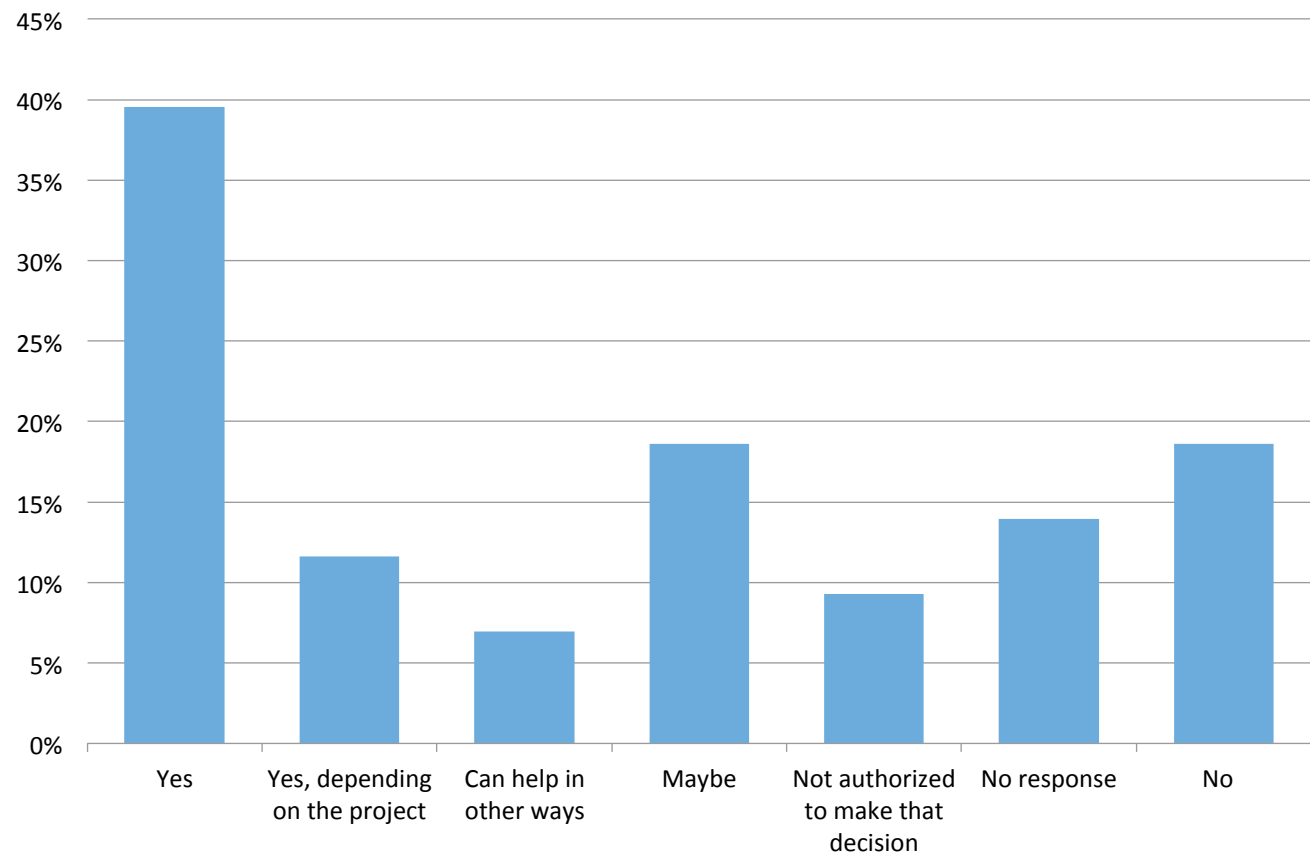
Locker Rooms (more space)

0% 5% 10% 15% 20% 25% 30%



USER GROUP SURVEY

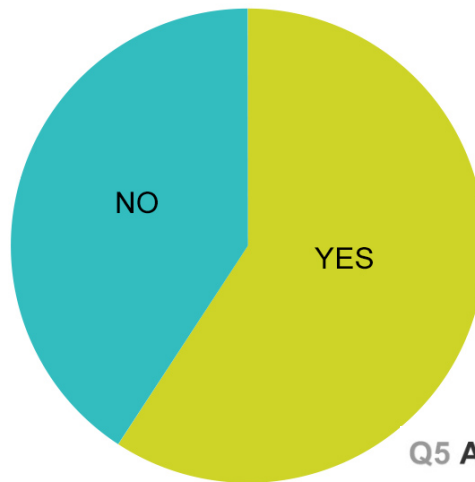
Willing to Contribute



COMMUNITY SURVEY

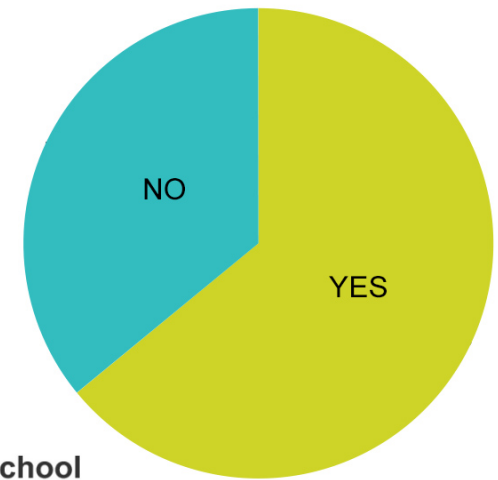
Q3 Do you have school-aged children (3-18)?

Answered: 1,160 Skipped: 0



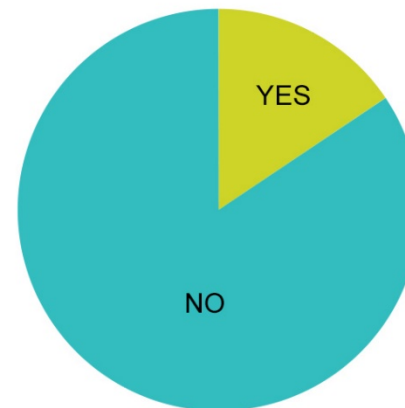
Q4 Do your children currently attend, or plan to attend, Marshfield's public schools?

Answered: 1,160 Skipped: 0



Q5 Are you an employee of the School District of Marshfield?

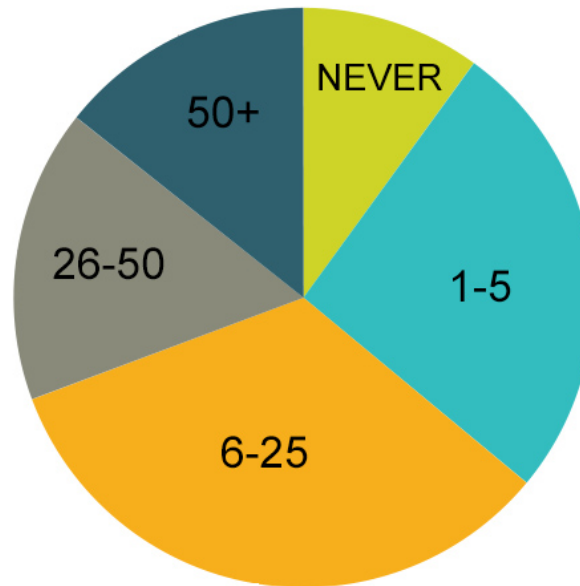
Answered: 1,160 Skipped: 0



COMMUNITY SURVEY

Q6 How many times per year do you use or attend an event at the athletic facilities (indoor or outdoor) at Marshfield High School or Middle School?

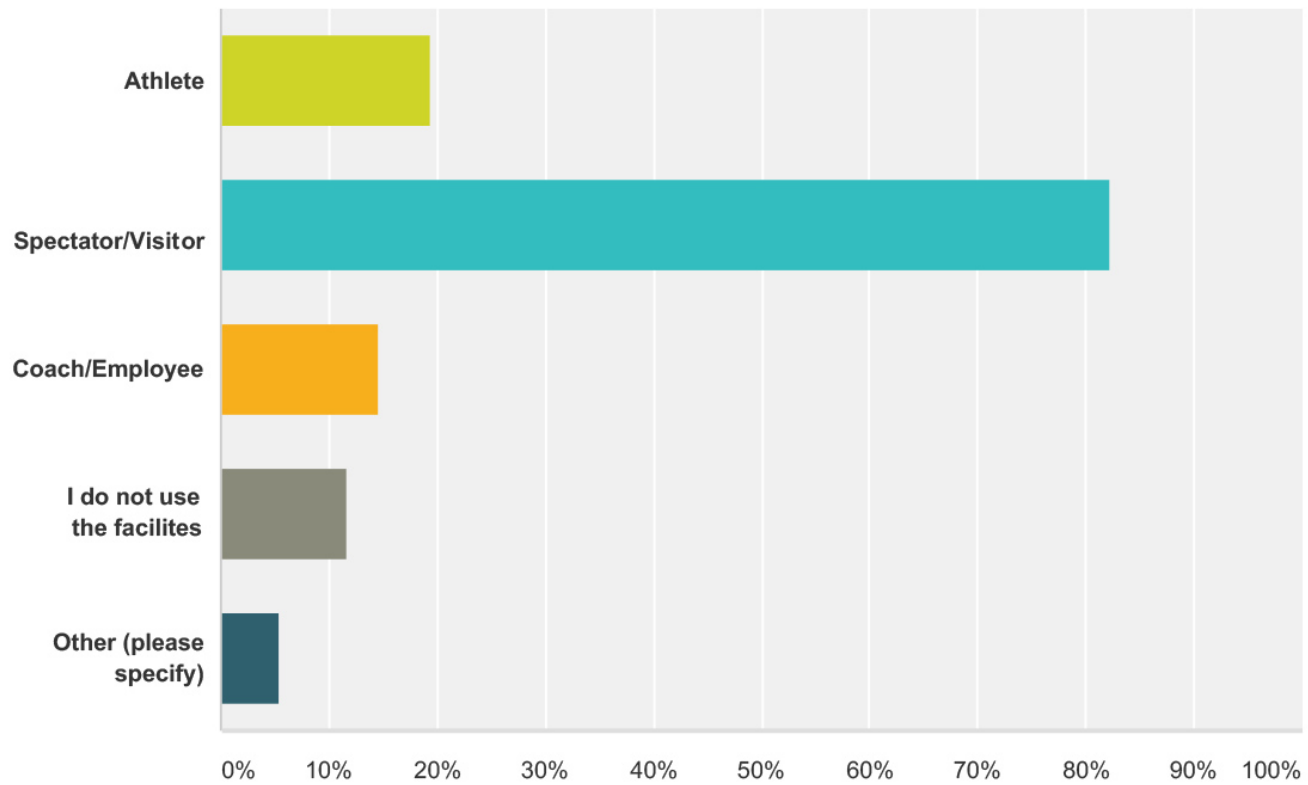
Answered: 1,160 Skipped: 0



COMMUNITY SURVEY

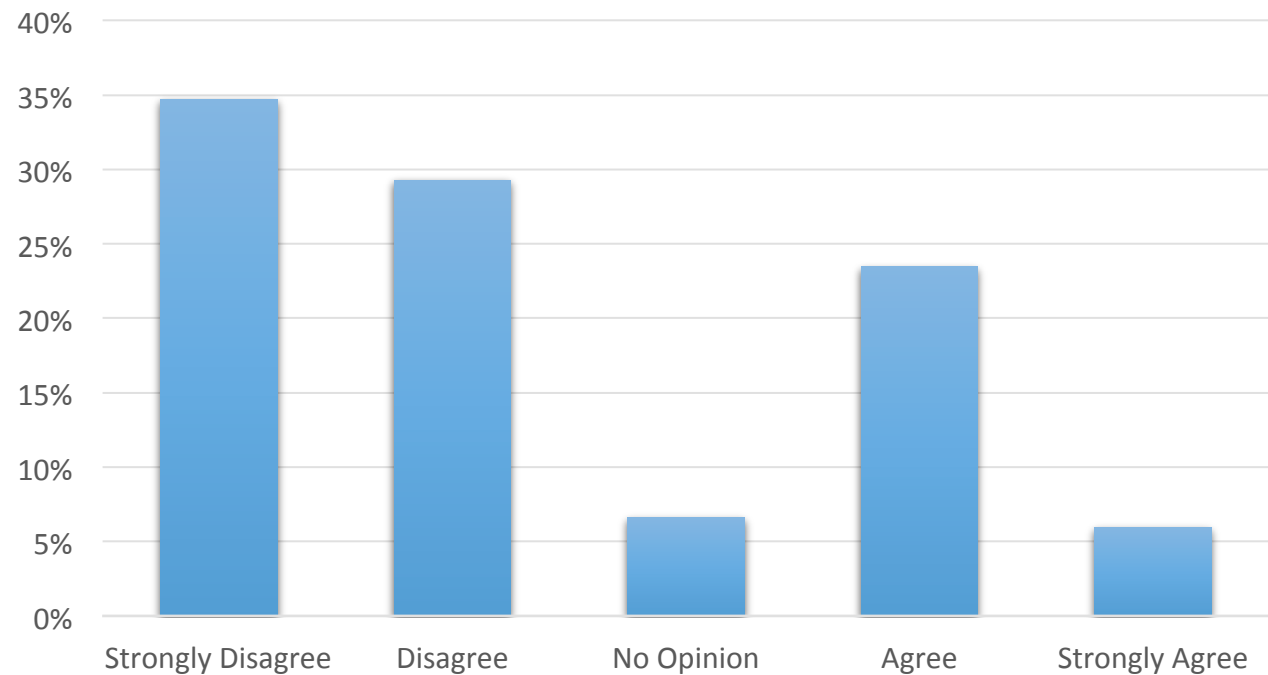
Q7 In what capacity do you visit or make use of Marshfield athletic facilities? (check all that apply)

Answered: 1,160 Skipped: 0



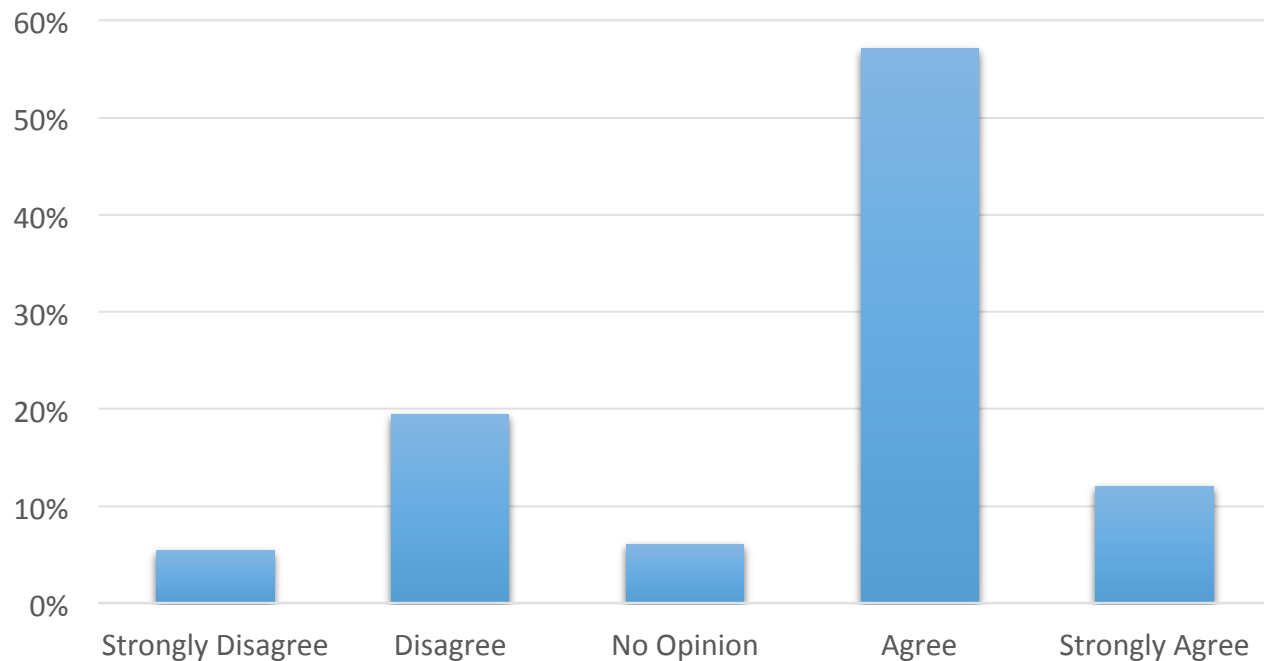
COMMUNITY SURVEY

Q9. The OUTDOOR athletic facilities at Marshfield High School are in adequate condition.



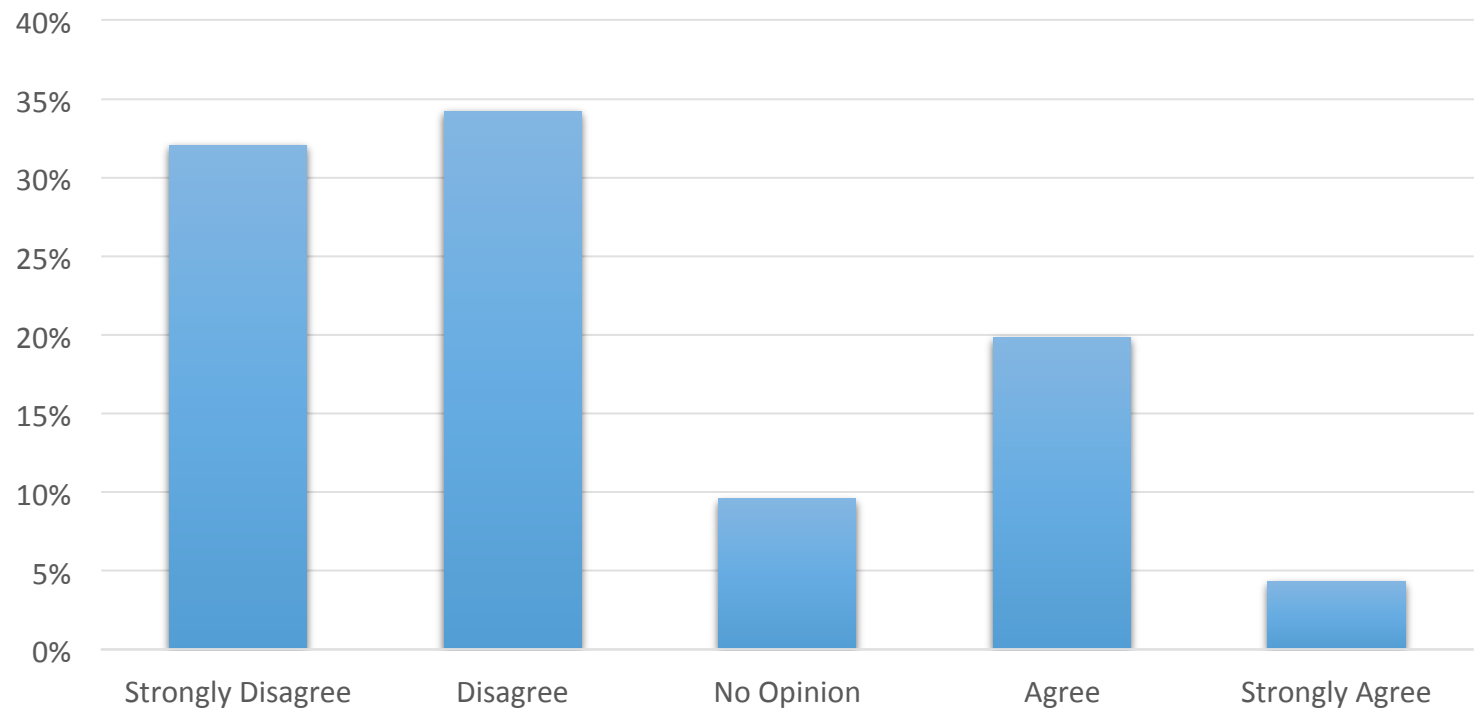
COMMUNITY SURVEY

Q10. The INDOOR athletic facilities at Marshfield High School are in adequate condition



COMMUNITY SURVEY

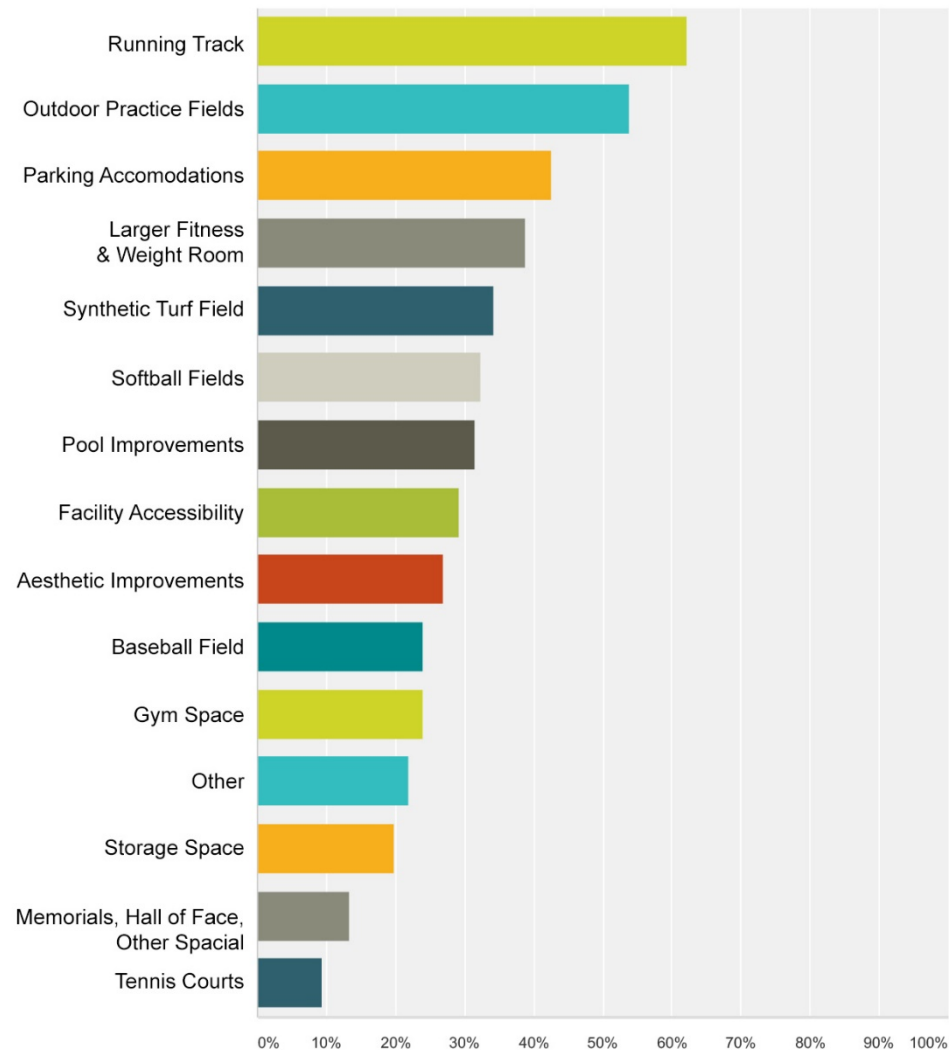
Q11. The Marshfield indoor and outdoor athletic facilities are equal to other schools similar in size.



COMMUNITY SURVEY

Q12 What improvements/upgrades need to be made to the indoor and outdoor athletic facilities at the Marshfield High School and Middle School? (check all that apply)

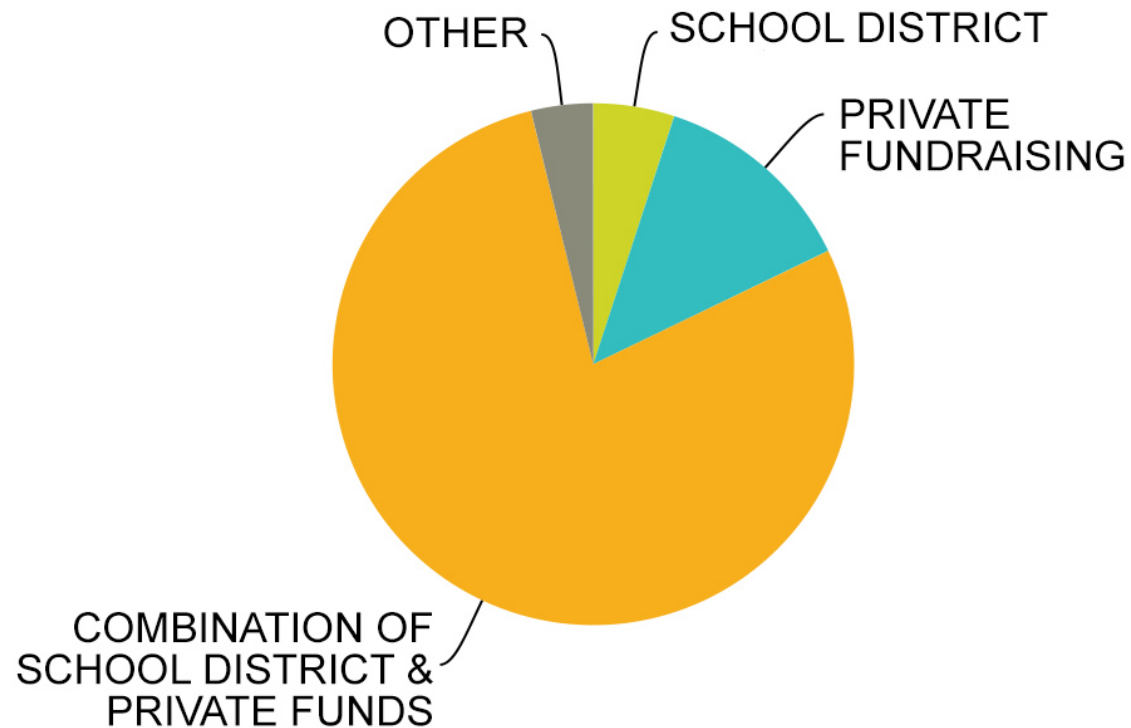
Answered: 1,014 Skipped: 146



COMMUNITY SURVEY

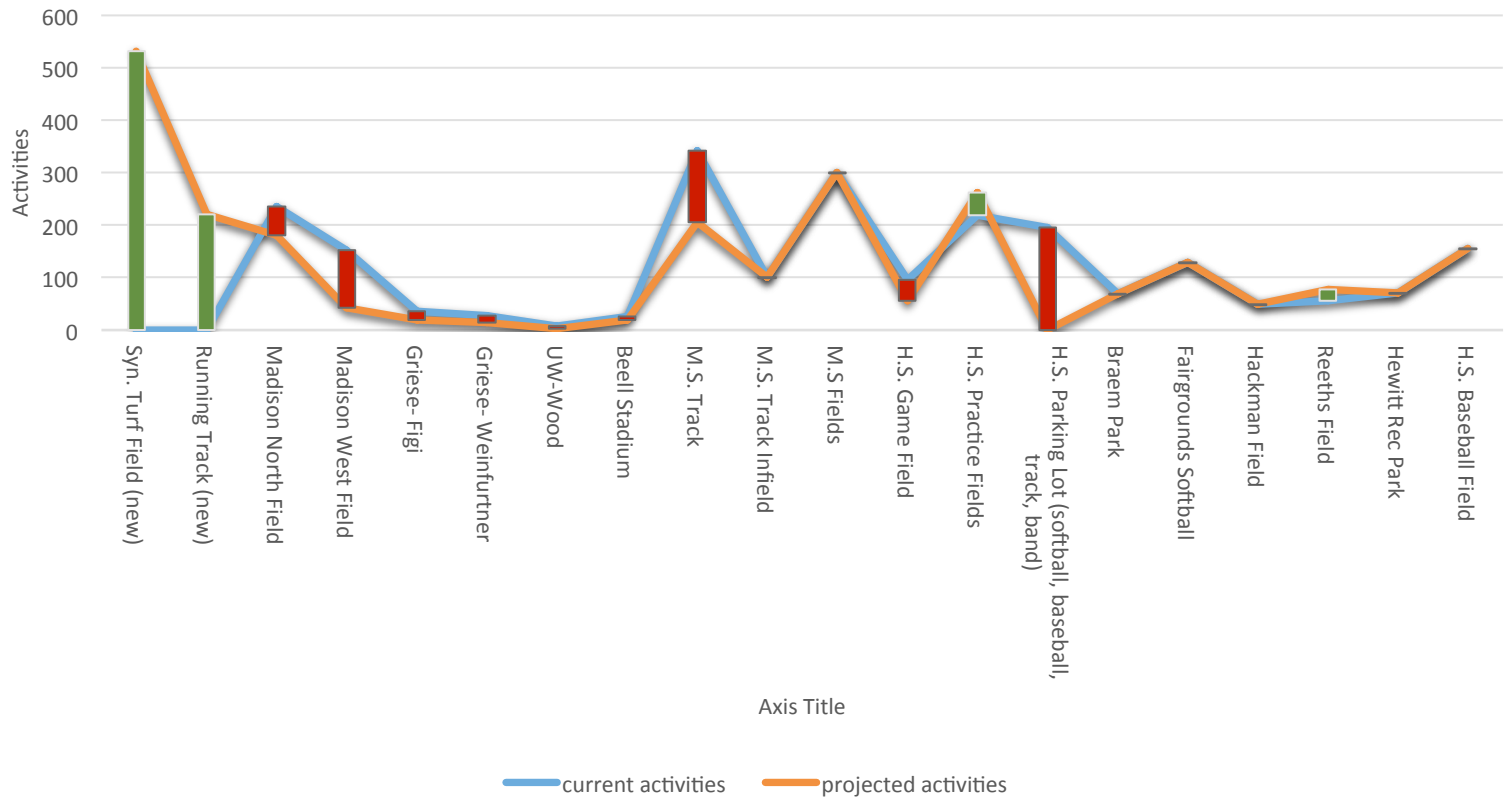
Q13 The redevelopment of facility upgrades should be funded by

Answered: 1,014 Skipped: 146



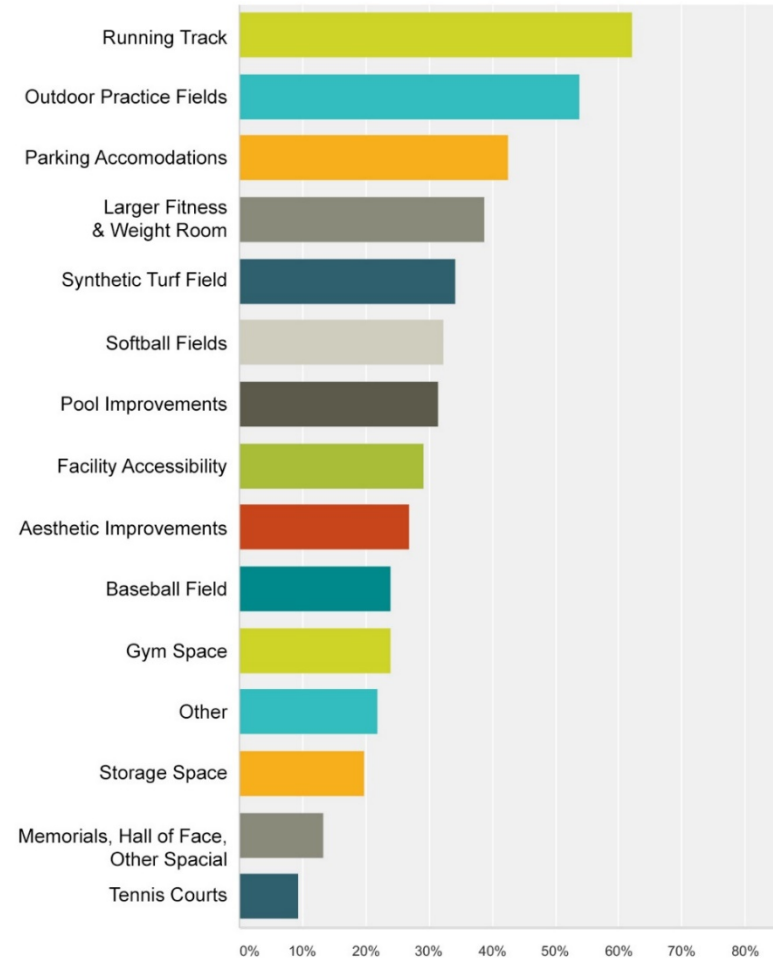
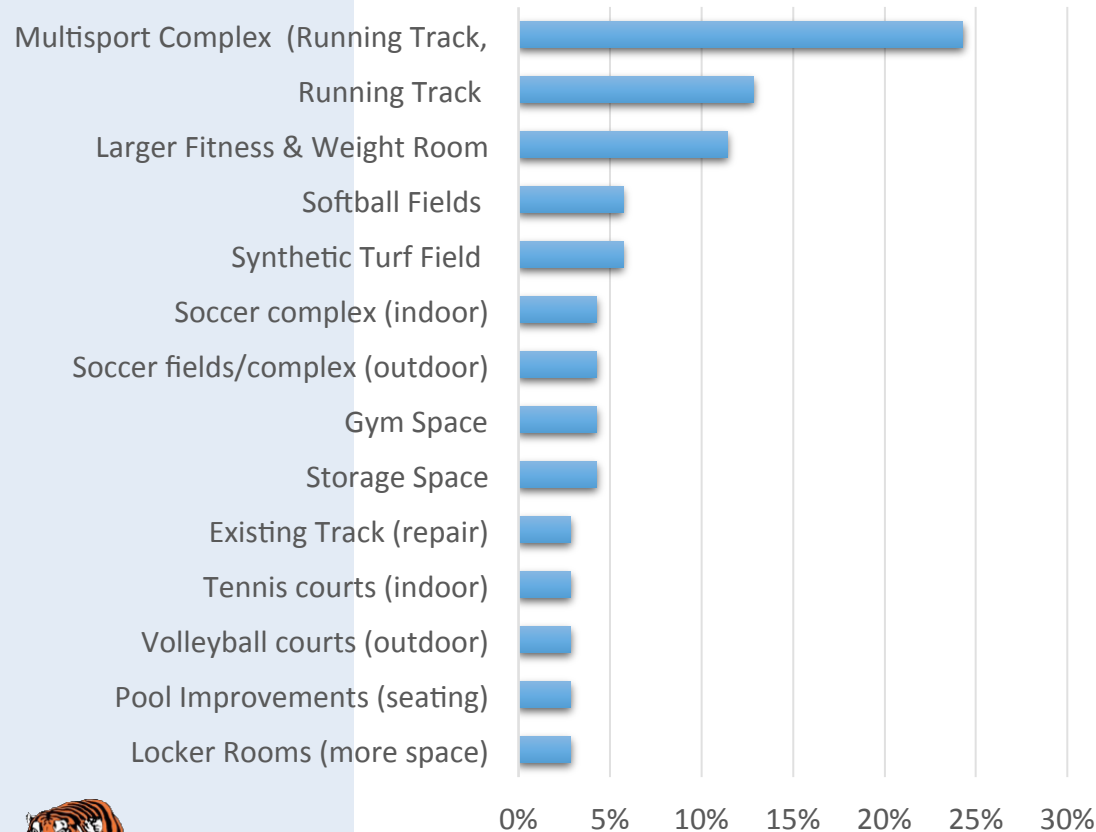
FACILITY USE STUDY

CURRENT & PROJECTED ACTIVITIES BY FACILITY



COMBINED SURVEY RESULTS

User Group Desired Facilities



IDENTIFYING THE NEED TO ACT

**As a community,
is there is a need to act on improvements to the
Marshfield Athletic Complex Master Planning?**



IDENTIFYING THE NEED TO ACT

Next Steps: Prioritization and locations of improvements

- **What facilities should be included and in what order?**
- **Where should the improvements be implemented?**

