

Build A Test Writing Your Own Questions

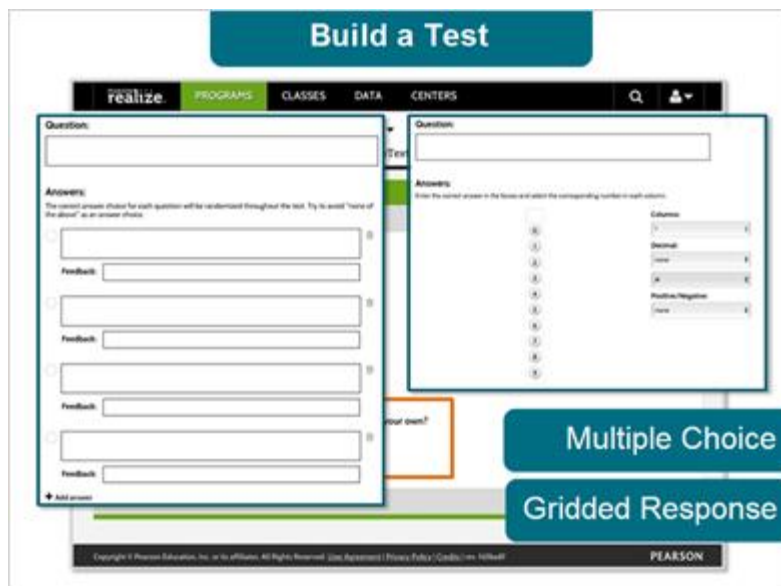
Build A Test Writing Your Own Questions



Hi, and welcome to My Pearson Training. In this tutorial, you will learn how to create a test in Realize, and add your own customized questions to that test.

You will also learn how to customize your tests with enhanced text and images.

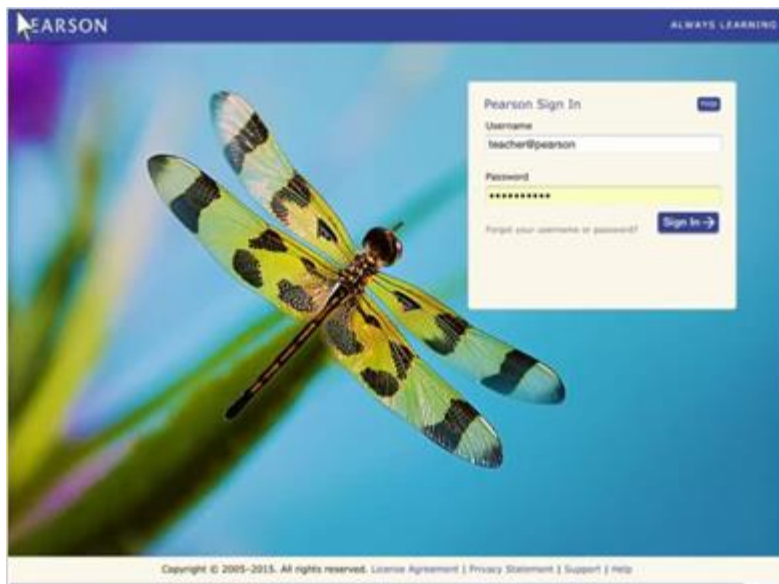
Introduction



The Build a Test page enables teachers to create custom tests and test questions.

Writing your own test questions allows you to build a custom test with multiple choice or gridded response questions.

Create a Test



Sign into your Realize account to start building a test.

First, navigate to the **Table of Contents** page for the program for which you want to build a test.

Select **Create content** and **Build a test**.

Enter the test **Title** and a detailed description.

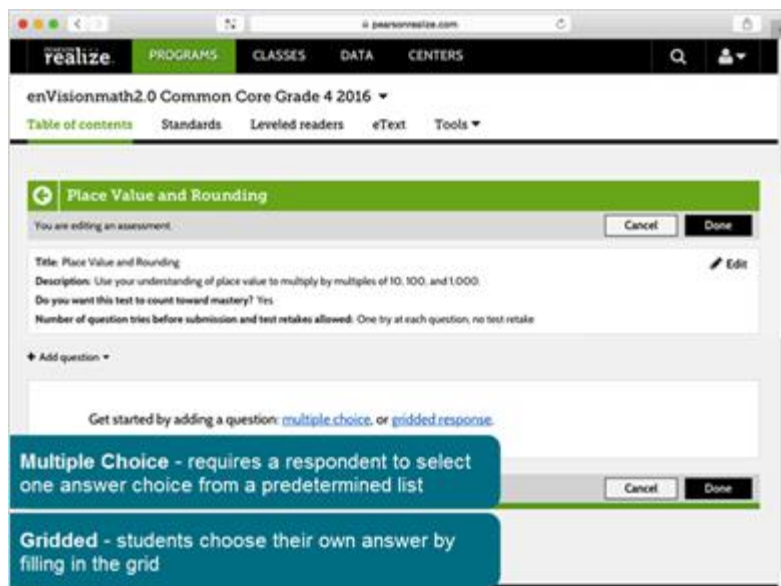
Select whether to count this test towards mastery, which is set to 70% by default.

Choose whether you want to build a test using questions from a test bank, or use your own questions.

Choose the number of tries allowed for each question and the number of test retakes allowed.

Then, click **Next**.

Writing Your Own Questions

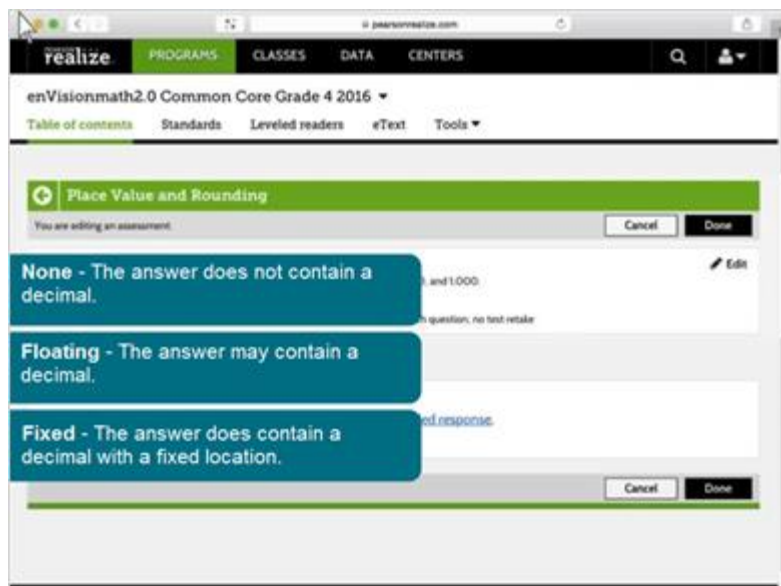


Now you can get started adding your questions to your test by selecting multiple choice or gridded response.

Multiple choice is an item type that requires a respondent to select one answer choice from a predetermined list. The test item will default to four answer choices, but you can add or remove item answers.

Gridded test items are similar to multiple choice items, except that students choose their own answer by filling in the grid rather than choosing an answer from a pre-defined list.

Adding a Gridded Response Item



To add a Gridded Response question to your test, first enter the question content.

To add images to your test, select the **Image** icon. The **Add Image** dialog box appears.

Add an image file by navigating to where your file is kept and click **Add Image**. You can also add alternate text that displays in the browser when the cursor hovers over the image.

Click **Save changes**. Your test displays with the image, still in edit mode.

Next, select the number of Columns needed for the answer.

Select a Decimal option:

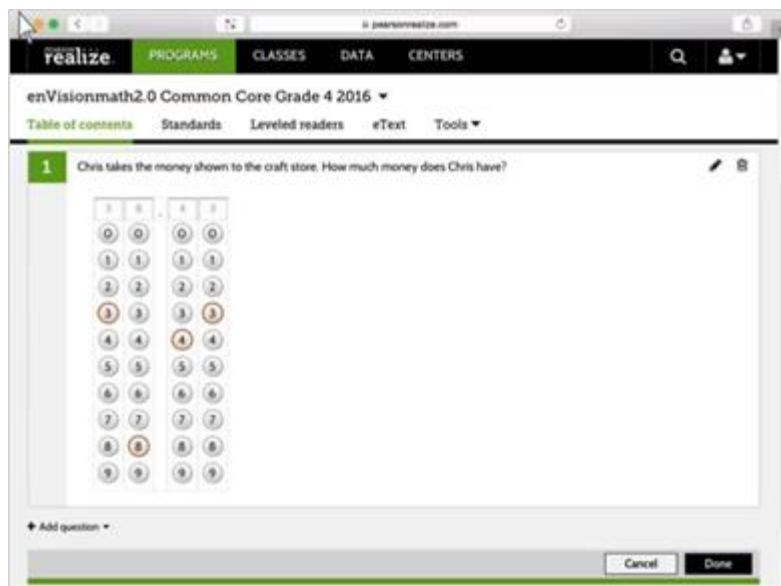
- None - The answer does not contain a decimal.
- Floating - The answer may contain a decimal and the student must select the decimal location as part of their answer.
- Fixed - The answer does contain a decimal with a fixed location. You must select the decimal location in the **####** field.

Select whether the answer will include the possibility of a Positive/Negative number.

Enter the correct answer in the boxes and select the corresponding number in each column.

When you are finished with the question content, click **Save**.

Adding a Multiple Choice Question



To add a multiple Choice question to your test, click **Add question**, and select **Multiple Choice**.

Then enter the question content.

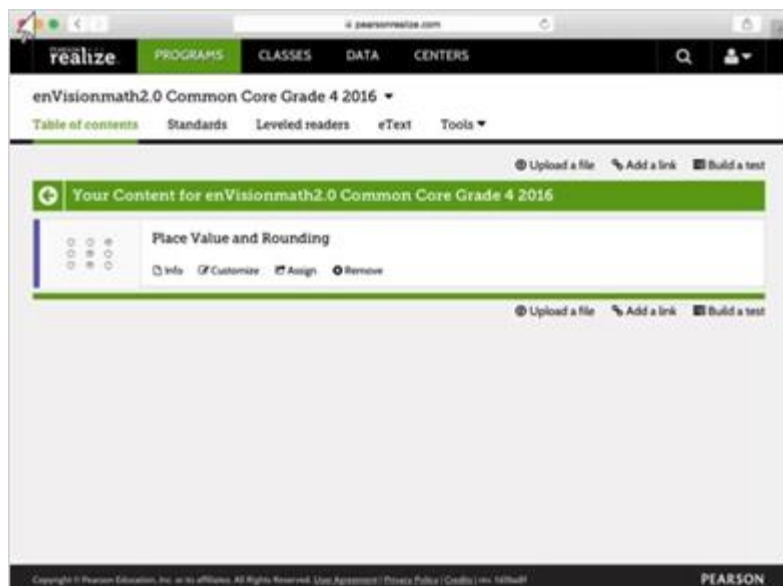
For each possible answer, enter the answer content in the appropriate box.

Select which of the answers is the correct answer. The correct answer choice will be randomized throughout the test.

When you are finished entering answer options, click **Save**.

Click **Done** on the bottom of the page when you are finished adding questions to your test.

Customize and Review Your Test



Now you can customize your test.

To edit the test information, click the **Edit** link on the far right of the title and description of the test. Click **Save** when you are finished.

You can also customize your test questions by adding or removing test questions, or changing the question order using drag and drop.

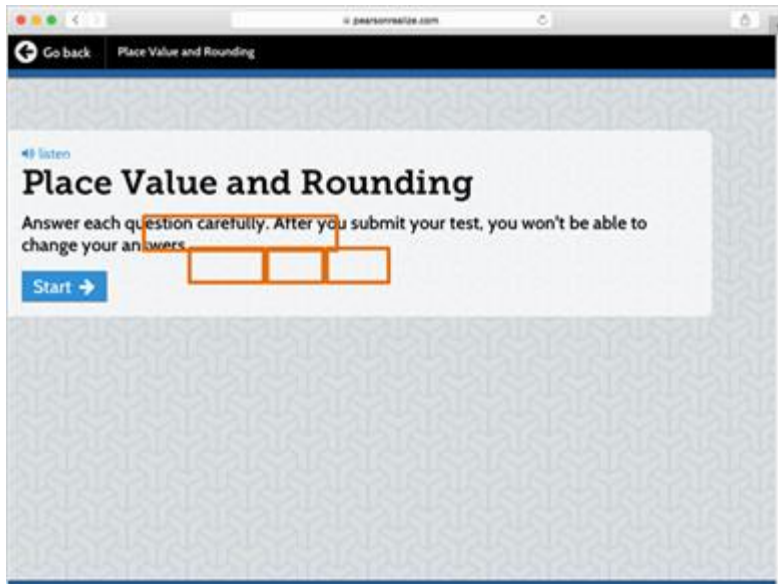
To review an individual question on your test, click **Show question**.

To remove a question from the test, click the trash can icon.

Click **Done** when you are finished reviewing your test. Your edited test displays with your changes.

***Please note that teachers cannot edit test bank items.*

View Tests



To view your test, Click **My content** from the Table of Contents page. All tests you have created will be listed here.

Choose **Customize** to edit your description and questions, click **Assign** to assign your test to students, or click **Remove** to delete your test.

Click the title of the test to view the test in the test player. This is the view that students will see when they take the assessment.

Learn More



To learn more about this and other Realize topics, visit MyPearsonTraining.com.

Thank you for joining me for this tutorial.